

# **Analyses and mapping of tools, needs and measures taken concerning climate adaptation amongst Swedish small and medium sized companies (SME)**

Status report for the development of a strategy for Climate Adaptation in the sphere of interest of the Swedish Agency for Economic and Regional Growth.

Funded by SMHI

Cecilia Wyser Pussel Klimatkonsult och Mats Helander Ecosoci



December 2017



Sustainable cities and clean tech	<ul style="list-style-type: none"><li>+ Business opportunity due to large municipal investments</li><li>- Increased cost due to flooding and insurances</li><li>- Increased cost of cooling (but reduced cost of heating)</li><li>- Impact on working environment</li></ul>
Tourism	<ul style="list-style-type: none"><li>+ competitive advantage, relatively well in Sweden</li><li>- Increased cost for snowmaking</li><li>- Less attractive destinations , due to drought and flooding, snow shortage and zero-crossings, coastal erosion and algae bloom</li><li>- Damage to cultural heritage buildings. floods and humidity</li><li>- More difficult planning due to less predictable weather</li></ul>
Food industry	<ul style="list-style-type: none"><li>+ Longer seasons - greater harvest , new crops and exports</li><li>- Lack of water and food raw material</li><li>- Impact on primary production</li></ul>
Manufacturing Industry	<ul style="list-style-type: none"><li>- Interruptions in supply chains with major economic consequences</li><li>- Increased cost of insurances</li></ul>

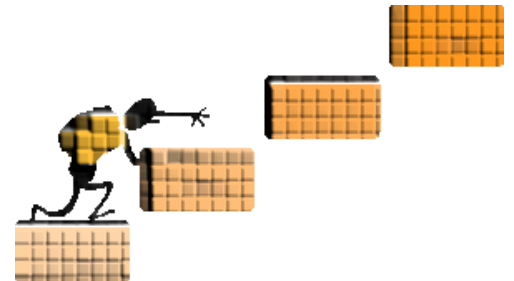
# State of the art in business sector

To what extent do companies work with climate adaptation?

- SMEs work to a low extent with adaptation to climate change
- Business opportunity and perceived climate effect
- Sustainable cities, cleantech, food industry, winter sports, large manufacturing companies with long supply chains.

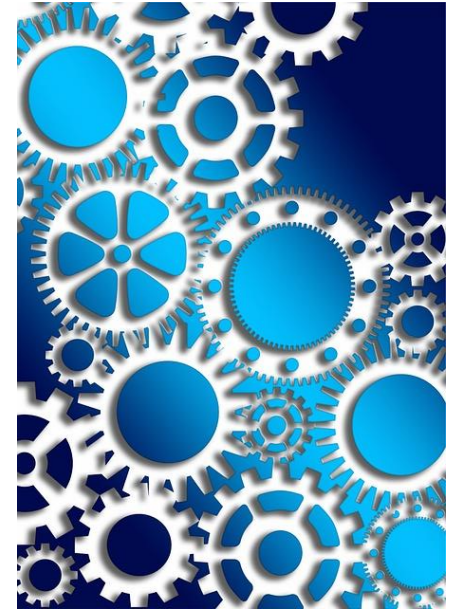
Available support?

- An overall lack of support structure and tools adapted for SME
- Existing tools mainly addressing larger companies.
- A few research and development projects with companies involved
- Most branch organization not very active



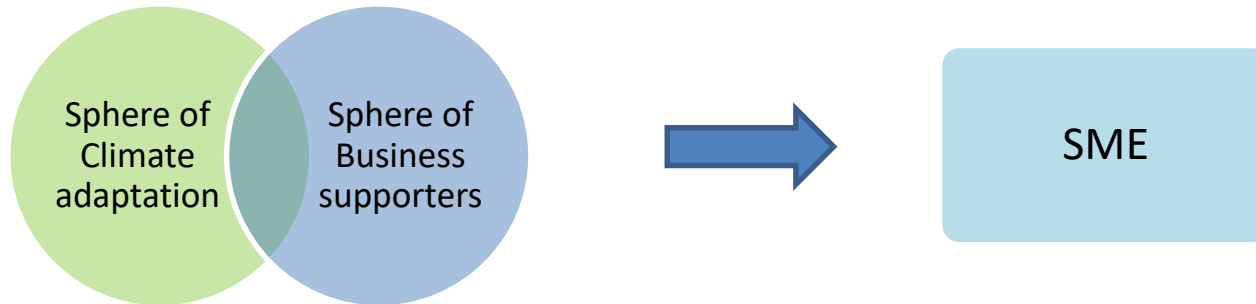
# Challenges for more climate adaptation in SME:s

1. Insight, knowledge and capacity
2. Incentives in the business environment
3. Tools and Standards
4. Economy and project funds
5. Structure and forms of cooperation

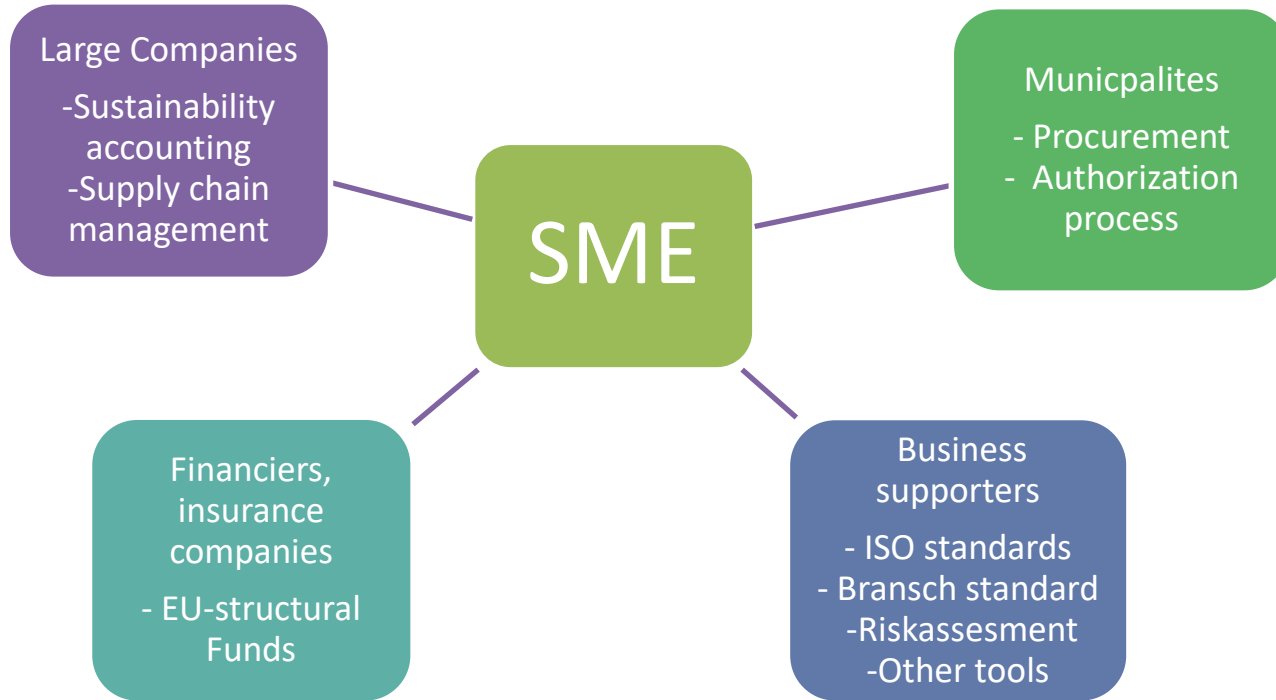


# It should be easy to do the right thing

- SME-companies needs access to competent support structure in the business sphere
  - Integrated into normal process
  - Packing of measures – doable for a SME-company
- Support the supporters rather than targeting SME-companies
- Increase the mutual understanding between the spheres of business supporters and sphere of climate adaptation



# Supportive business environment



# Structures and forms of cooperation

- Companies facing the same problem, e.g. risk assessment
- Companies solving the same problem, e.g. clean tech
- Access to meet knowledge providers
- Arenas for talks between regions, municipalities, county administrative boards and other authorities



# Concluding remarks

- Brief overview over a report we performed on behalf of Swedish Agency for Economic and Regional Growth (Tillväxtverket) in 2017.
- Positive that they have taken the initiative to this study and developed a strategy
- We hope that this work will
  - Inspire actors in the business sphere to find their role in climate adaptation
  - Increase the understanding of the business perspective among actors in the sphere of climate adaptation.



# Thank you for your attention!



Cecilia Wyser  
Pussel Klimatkonsult  
Mob: 0703 965634  
cecilia@pusselklimat.se  
www.pusselklimat.se

# Method used

Method: Literature studies and dialogue with enterprise promoters, branch- and company representatives

Referendum group with representatives from sphere of interests and experts on aspects of climate adaptation

Sphere of interest: sustainable cities, clean tech, manufacturing industry, food industry and tourism.

Question at issue:

- To what extent do you work with climate adaptation?
- Where do you find support?
- What are the barriers?
- What would make you work more?
- What should The Swedish Agency for Economic and Regional Growth do?

