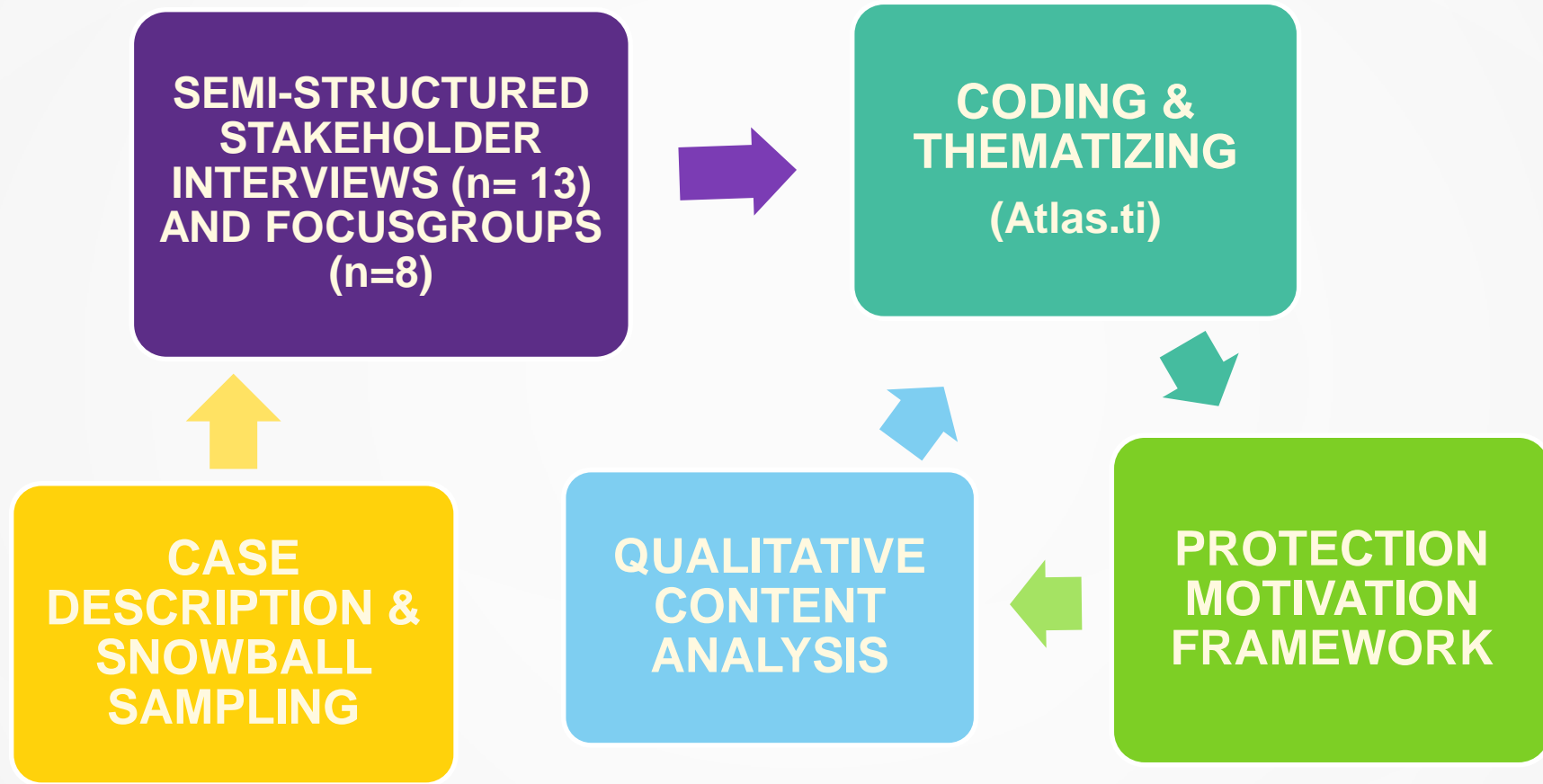
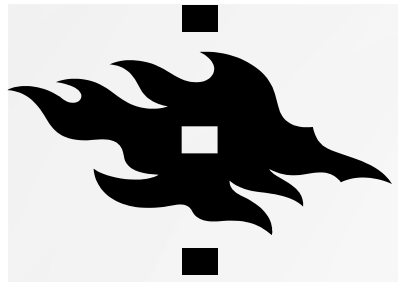


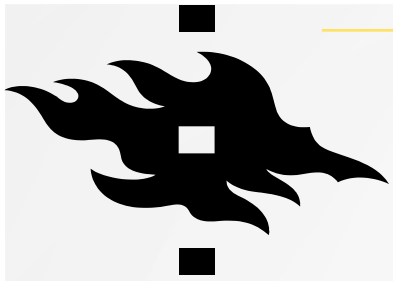


# RISK PERCEPTIONS AND ADAPTATION DECISION-MAKING AT NORDIC FARM-SCALE

Janina Käyhkö, [janina.kayhko@helsinki.fi](mailto:janina.kayhko@helsinki.fi)

# 1 MATERIAL AND METHODS





# UUSIMAA REGION

2 STUDY SITE

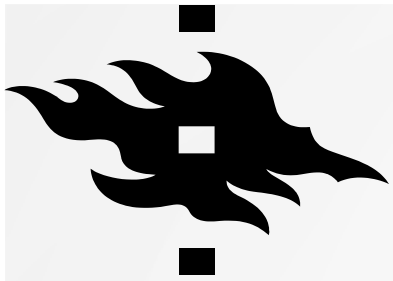
<b>Inhabitants</b>	1 644 107
<b>Farmer population</b>	2 828
<b>Average farm size</b>	50 hectares
<b>Total land area (km<sup>2</sup>)</b>	9 097
<b>Agricultural land area (km<sup>2</sup>)</b>	1 860



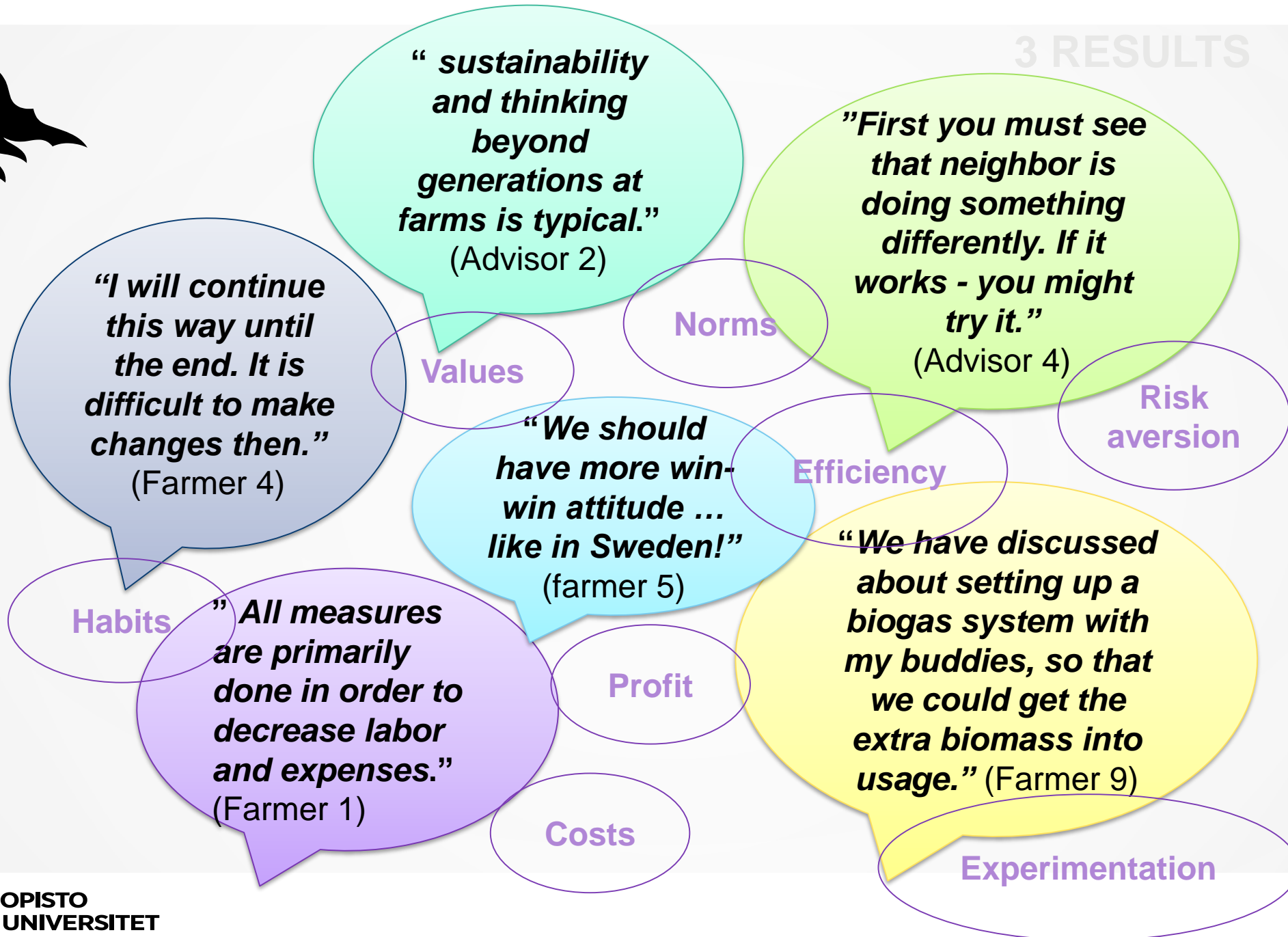
# CLIMATIC VULNERABILITY & AGRICULTURE IN UUSIMAA

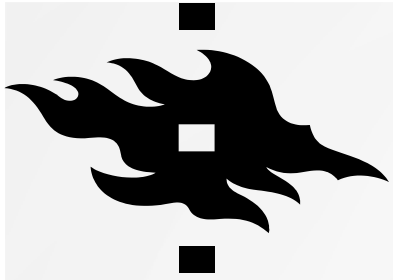
<b>The main crops (excluding fodder)</b>	spring wheat, barley and oats
<b>Dominating soil types</b>	clayey & clayey silt soils
<b>Coastline (with Baltic Sea)</b>	1 200 km
<b>Erosion risk degree</b>	high



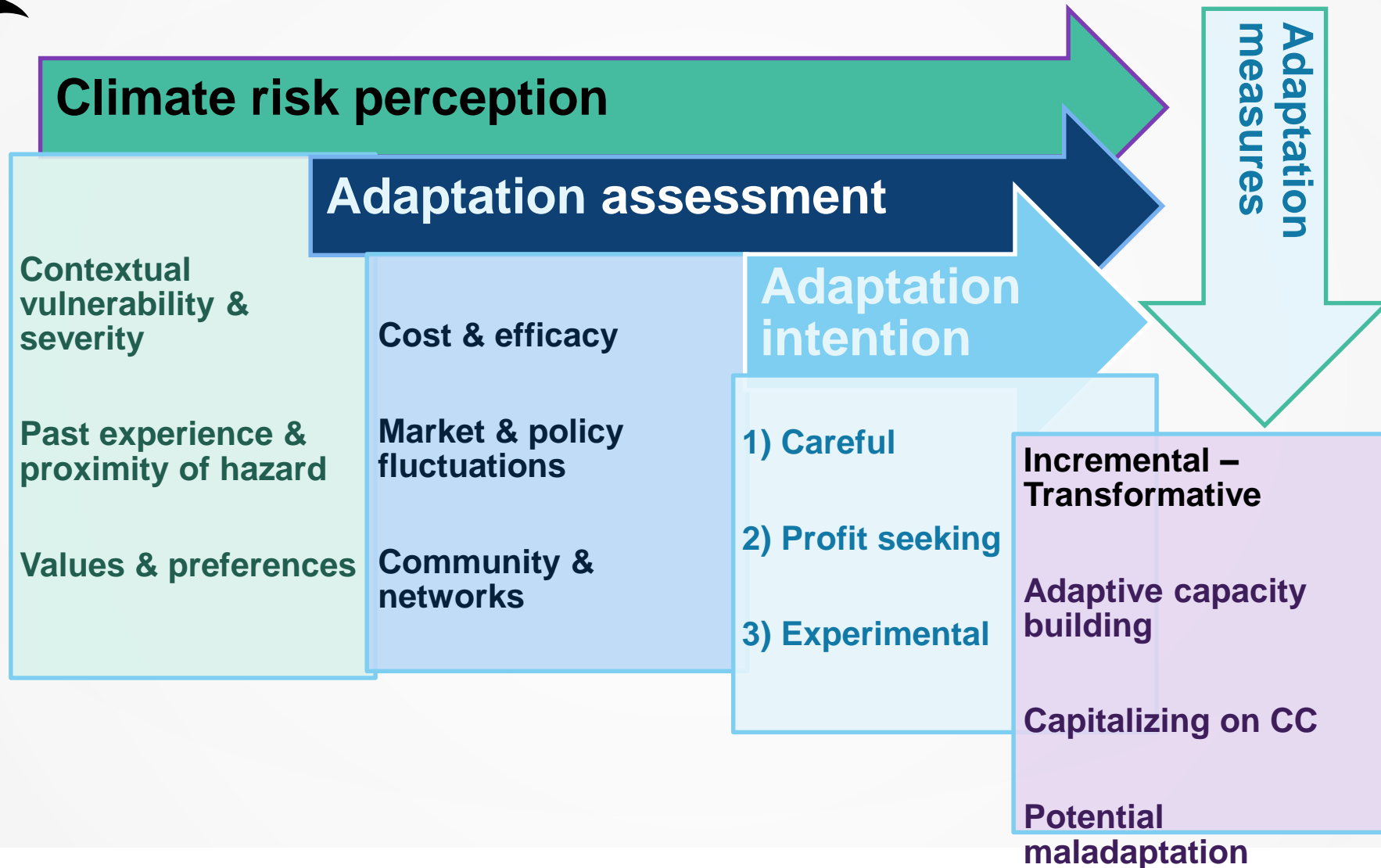


## 3 RESULTS

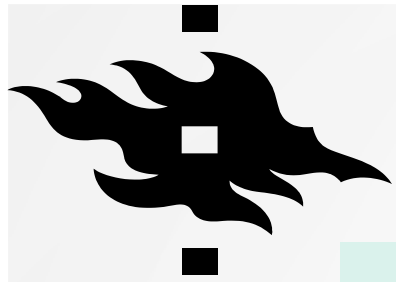




3 RESULTS



# PERCEPTIONS → ACTION?



## AT RISK:

Crop yield & quality  
 Farm income & livelihood  
 Cultivation practices  
 Local economies  
 Regional productivity  
 Soil & water quality  
 Environment  
 Food production


FARM  
SCALE

AGRI-  
FOOD  
SYSTEM  
LEVEL

## ADAPTATION DIRECTED TO:

New crops  
 Field work measures & machinery  
 Field & soil improvement  
 Changing the production structure & orientation  
 Water protection





**NO POLICY GUIDANCE +  
RISK AVOIDANT/ PROFIT  
SEEKING RISK RESPONSES  
= RISK REDUCTION,  
INCREMENTAL ADAPTATION &  
MALADAPTATION**

**PARTICIPATORY POLICIES +  
EXPERIMENTAL RISK  
RESPONSES  
= ADAPTIVE CAPACITY  
BUILDING &  
TRANSFORMATIONAL  
ADAPTATION**

5 CONCLUSIONS

THANK YOU!

Please, contact!

[Janina.kayhko@helsinki.fi](mailto:Janina.kayhko@helsinki.fi)

 @JaninaKhk